



TAKE CARE OF TEXAS: EDUCATOR MATERIALS

HANDOUT

How to Take Care of Texas



TEKS 4.1B; 4.3B; 4.5A,B; 4.7A,B,C; 4.8B | 5.1B; 5.3B; 5.5A,B,C; 5.7B; 5.8A,B; 5.9A,B,C | 6.1B; 6.3B; 6.5C; 6.7A

How to Take Care of Texas

We can all care for our state by conserving natural resources, practicing sustainability wherever possible, and being mindful of our impact on the natural environment. Here are some of the ways you can help Take Care of Texas!



Reduce Your Waste

A great way to Take Care of Texas is to minimize your waste. An easy way to do this is by limiting the number of single-use items you use, like plastic bags and water bottles.

By taking reusable bags whenever you and your family go to the store and bringing your own reusable water bottle when you leave the house, you can reduce the amount of trash you send to the landfill.

Reuse Items

Before throwing things away when you are done with them, consider if there is another use for them. Old t-shirts can be turned into toys for your pets or rags to use around the house. Single-use water bottles can be turned into bird feeders. Even tires can be reused as flower pots!

Trashing items should always be the last option.



Recycle (and Compost)

Whenever you do decide to trash items, always try to recycle and compost first, before you send them to the landfill. Most types of plastic, metal, and glass can be recycled, but always check to see what your city's rules are.

You can also reduce what you send to the landfill by composting your food scraps in a compost bin or using a local composting service.

Recycle Electronics and Dispose of Hazardous Materials Properly

Our old electronics have valuable metals that can also be reused. By taking your broken phones and computers to be recycled, you give them a chance to be used in future electronics.

Some items we use in our homes, like paint and cleaning materials, are very dangerous. If these items are not disposed of properly, they can pollute the environment and pose a threat to human health. By taking them to a Household Hazardous Waste (HHW) drop-off, you are helping protect yourself and the Texas environment!



Find locations at [TexasRecyclesComputers.org](https://www.texasrecyclescomputers.org) and [TexasRecyclesTVs.org](https://www.texasrecyclestv.org)



Pick Up Trash

We all love the State of Texas and its natural beauty. When waste is not disposed of properly, it hurts the unique ecosystems of Texas. That's why you should always make sure to pick up after yourself when you play outside and safely pick up trash when you see it. You can also Take Care of Texas by organizing a litter clean-up with your family and friends!

Plant Native Plants

A great way to help take care of our state is by growing native Texas plants around your house. These plants are far more eco-friendly than just grass, because they don't need as much water as a lawn. By planting native trees, shrubs, and flowers, you are providing food and shelter for wild Texas animals.



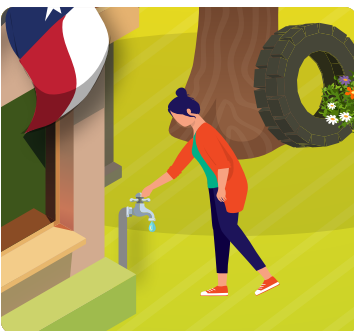
Harvest Rainwater

By placing a rain barrel under the rain gutters on your house, you can help conserve water. These barrels collect the rainwater that falls on your roof and stores it for you to use later.

You can use your rainwater to water your plants and yard instead of relying on tap water that can be used for drinking.

Walk and Bike Places

The cars we drive run primarily on fossil fuels that emit chemicals that can turn into smog—a term which comes from a mixture of smoke and fog. By choosing to walk or bike, you can help keep the air clean and also get some exercise. When we take public transportation or carpool we also reduce the number of vehicles on the road, which helps keep our beautiful Texas skies clear.



Conserve Water

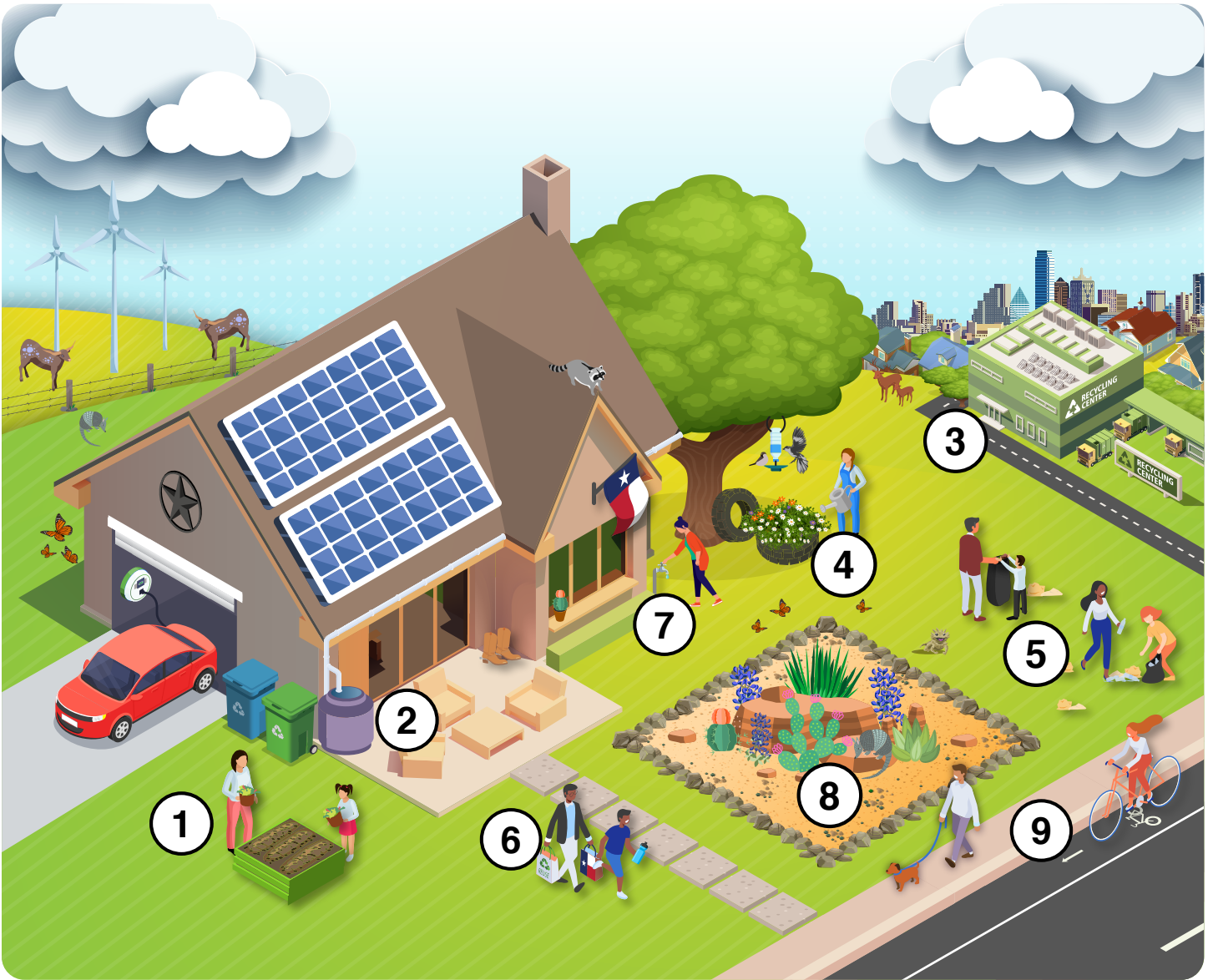
By not leaving the faucet running, both indoors and outdoors, you are helping conserve one of our most precious natural resources—water! This can also mean limiting the water you use while watering your garden, washing your hands, or brushing your teeth.

Another way to save water is by making sure you don't have any leaky pipes or faucets. While it may seem like a small bit of water lost, that amount can add up.

Learn more ways to help Take Care of Texas at [TakeCareofTexas.org!](https://www.TakeCareofTexas.org)

Fill in the blanks

Find the answers for this activity at takecareoftexas.org/howtotcot-ans.



recycle conserve water compost your food scraps collect rainwater reuse items
walk & bike places reduce your waste use native plants in your yard pick up trash

① _____
② _____
③ _____

④ _____
⑤ _____
⑥ _____

⑦ _____
⑧ _____
⑨ _____

Word Search

Find the answers for this activity at takecareoftexas.org/howtotcot-ans.

Hint: Some words might be backwards!

U G J I D U G R E S H M W N Z
L E R R A B E A G K E U D H E
E B S K L C I C R O F K K H L
T W L U Y M E C U D E R I W A
O A Q C E X X E X U E T U B O
W X L L S R N S Z N S N D E J
V E I O R C N F O O Q C H I X
O A S R X S S R P E T Z S J U
Q F U N Q V E M Z E R N A L S
X J T A J L O J R F K Z R F N
V D C B M C T R O M I T T Q Q
V C A E L E C T R O N I C S F
D J C V B D T J U Q D N K T M
S H Z W B M B U E S B E D X Z
K L H M I Y U Z Q A I Y F F M

Look for these words.

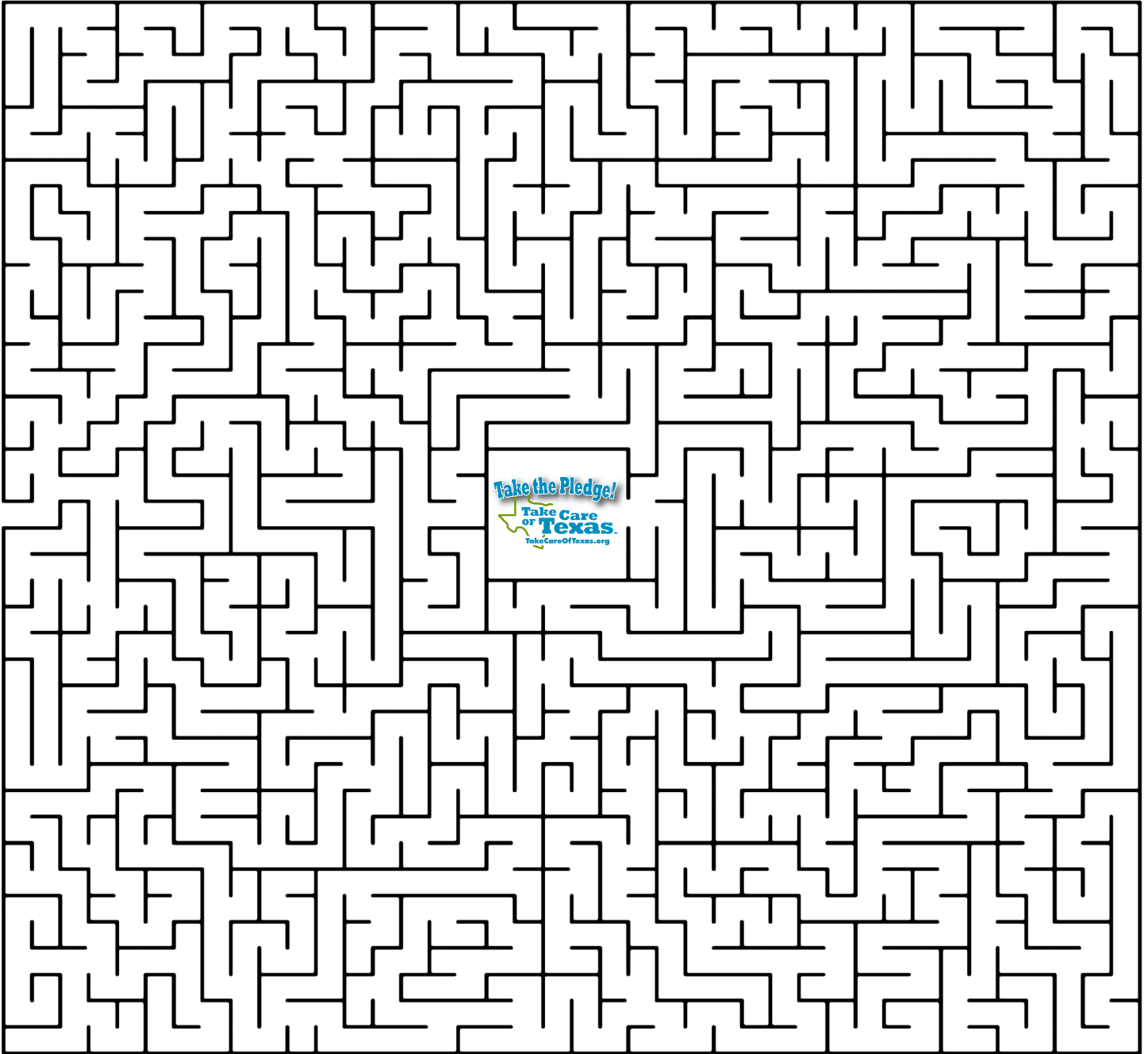
barrel bike cactus compost electronics garden

HHW recycle reduce reuse trash walk

"Take the Pledge" Maze

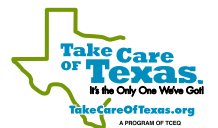
Find the answers for this activity at takecareoftexas.org/howtotcot-ans.

**Find your way to Texas and take the pledge.
Take Care of Texas. It's the only one we've got.**



How is our customer service? www.tceq.texas.gov/customersurvey

The TCEQ is an equal opportunity employer. The agency does not allow discrimination on the basis of race, color, religion, national origin, sex, disability, age, sexual orientation, or veteran status.





TAKE CARE OF TEXAS: EDUCATOR MATERIALS

ANSWER KEY

How to Take Care of Texas

Fill in the Blank

- 1. Compost your food scraps
- 2. Collect rainwater
- 3. Recycle
- 4. Reuse your items
- 5. Pick up trash
- 6. Reduce your waste
- 7. Conserve water
- 8. Use native plants in your yard
- 9. Walk and bike places

Word Search

U	G	J	I	D	U	G	R	E	S	H	M	W	N	Z
L	E	R	R	A	B	E	A	G	K	E	U	D	H	E
E	B	S	K	L	C	I	C	R	O	F	K	K	H	L
T	W	L	U	Y	M	E	C	U	D	E	R	I	W	A
O	A	Q	C	E	X	X	E	X	U	E	T	U	B	O
W	X	L	L	S	R	N	S	Z	N	S	N	D	E	J
V	E	I	O	R	C	N	F	O	O	Q	C	H	I	X
O	A	S	R	X	S	S	R	P	E	T	Z	S	J	U
Q	F	U	N	Q	V	E	M	Z	E	R	N	A	L	S
X	J	T	A	J	L	O	J	R	F	K	Z	R	F	N
V	D	C	B	M	C	T	R	O	M	I	T	T	Q	Q
V	C	A	E	L	E	C	T	R	O	N	I	C	S	F
D	J	C	V	B	D	T	J	U	Q	D	N	K	T	M
S	H	Z	W	B	M	B	U	E	S	B	E	D	X	Z
K	L	H	M	I	Y	U	Z	Q	A	I	Y	F	F	M

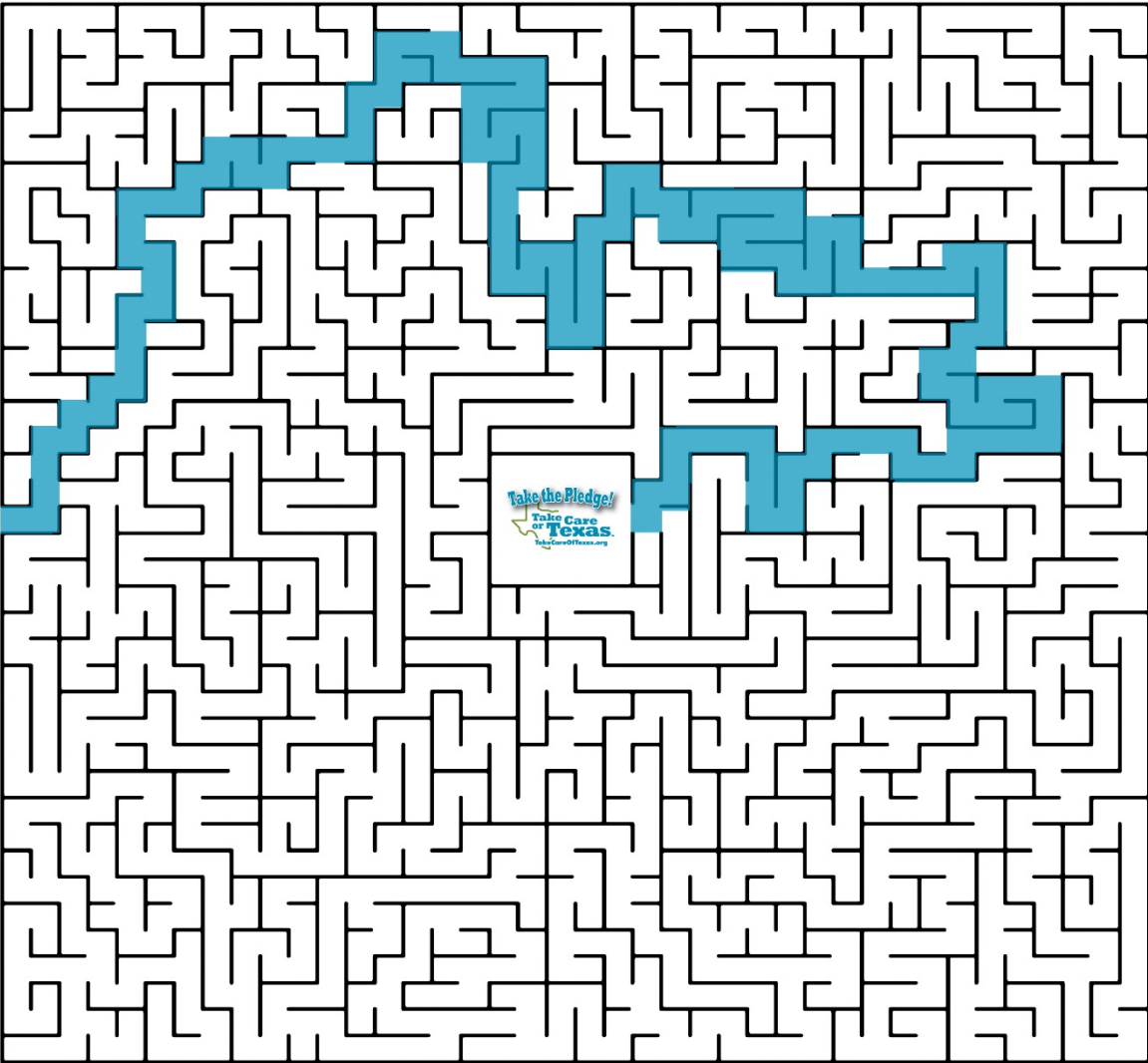




TAKE CARE OF TEXAS: EDUCATOR MATERIALS

ANSWER KEY

“Take the Pledge” maze



(4/24)

How is our customer service? www.tceq.texas.gov/customersurvey

The TCEQ is an equal opportunity employer. The agency does not allow discrimination on the basis of race, color, religion, national origin, sex, disability, age, sexual orientation or veteran status.