

TEXAS COMMISSION ON ENVIRONMENTAL QUALITY

# TAKE CARE OF TEXAS

## *Lone Star Activity Book*



**Take Care  
OF Texas**™

It's the only one we've got.

[TakeCareOfTexas.org](http://TakeCareOfTexas.org)



# How Do You Take Care of Texas? 2016 Art Contest Winner

Congratulations to Gabriella Almaguer, a 4th grader from Driscoll Elementary in Driscoll, Texas! Out of more than 4,000 entries received from across the state, Gabriella was awarded the grand prize in the Take Care of Texas Kids Art Contest for 2016. Gabriella's artwork is featured below. She also won a laptop courtesy of Samsung Austin Semiconductor!



## Kids Art Contest

See how you can enter the next art contest by visiting  
[TakeCareOfTexas.org/art-contest](http://TakeCareOfTexas.org/art-contest).

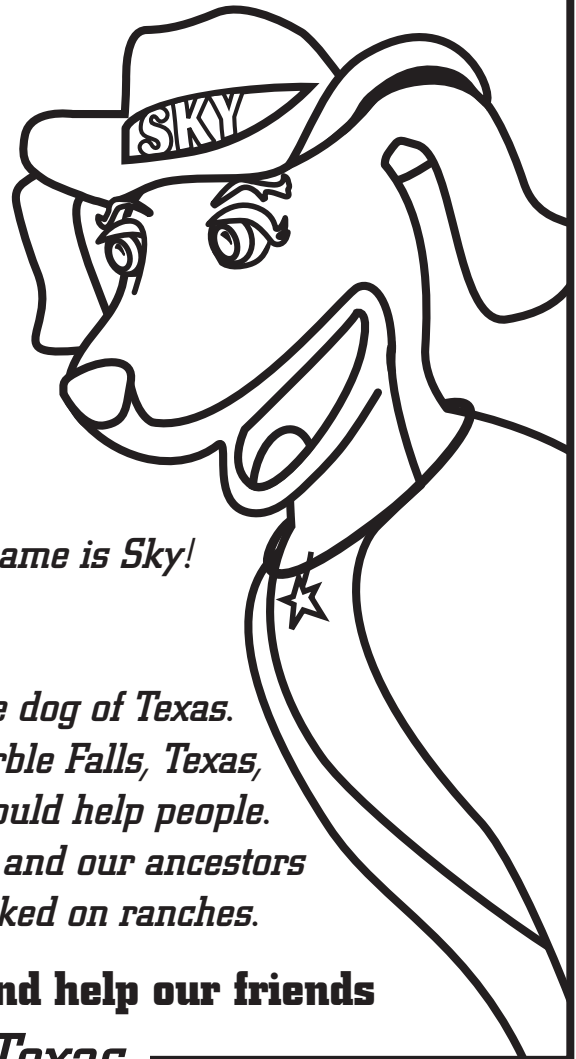


# TAKE CARE OF TEXAS

## *Lone Star Activity Book*



*Hi, I'm River!*



*And my name is Sky!*

*We're Blue Lacys, the state dog of Texas.  
Our ancestors settled in Marble Falls, Texas,  
back in the 1800s so they could help people.  
Texas Blue Lacys love to work and our ancestors  
were herding dogs that worked on ranches.*

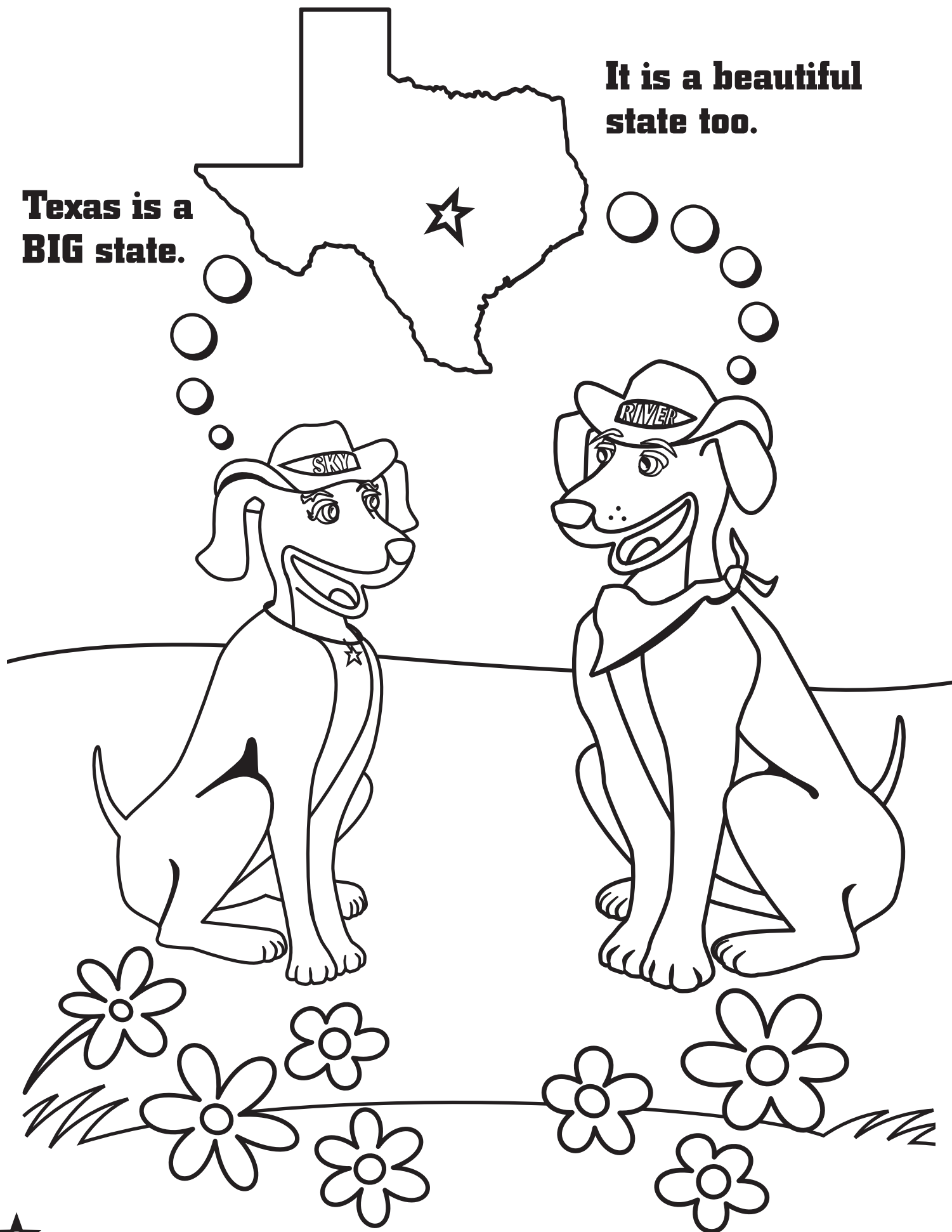
**We also like to do our part, and help our friends  
*Take Care of Texas.***

**Tell us your name**

---

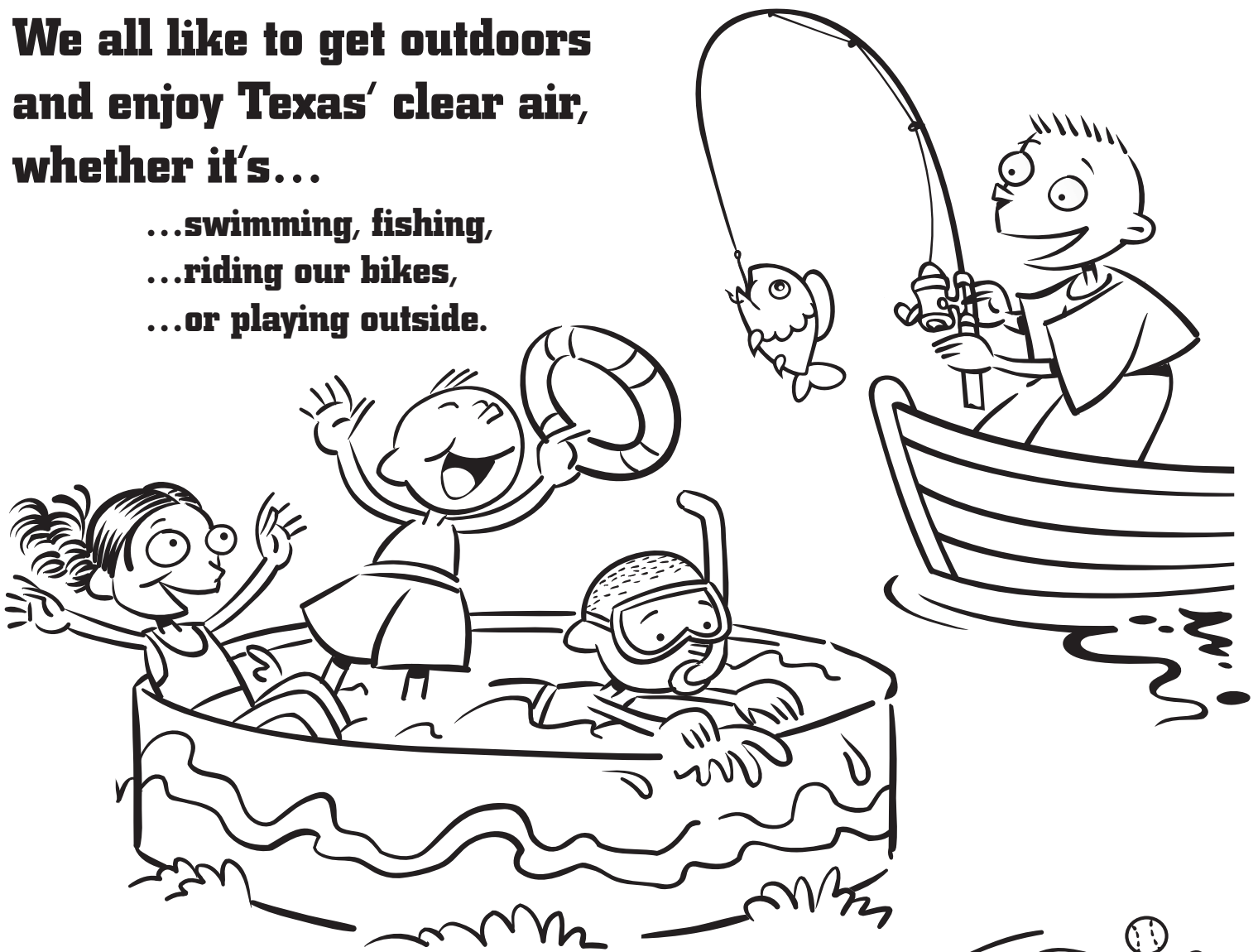
**Texas is a  
BIG state.**

**It is a beautiful  
state too.**



**We all like to get outdoors  
and enjoy Texas' clear air,  
whether it's...**

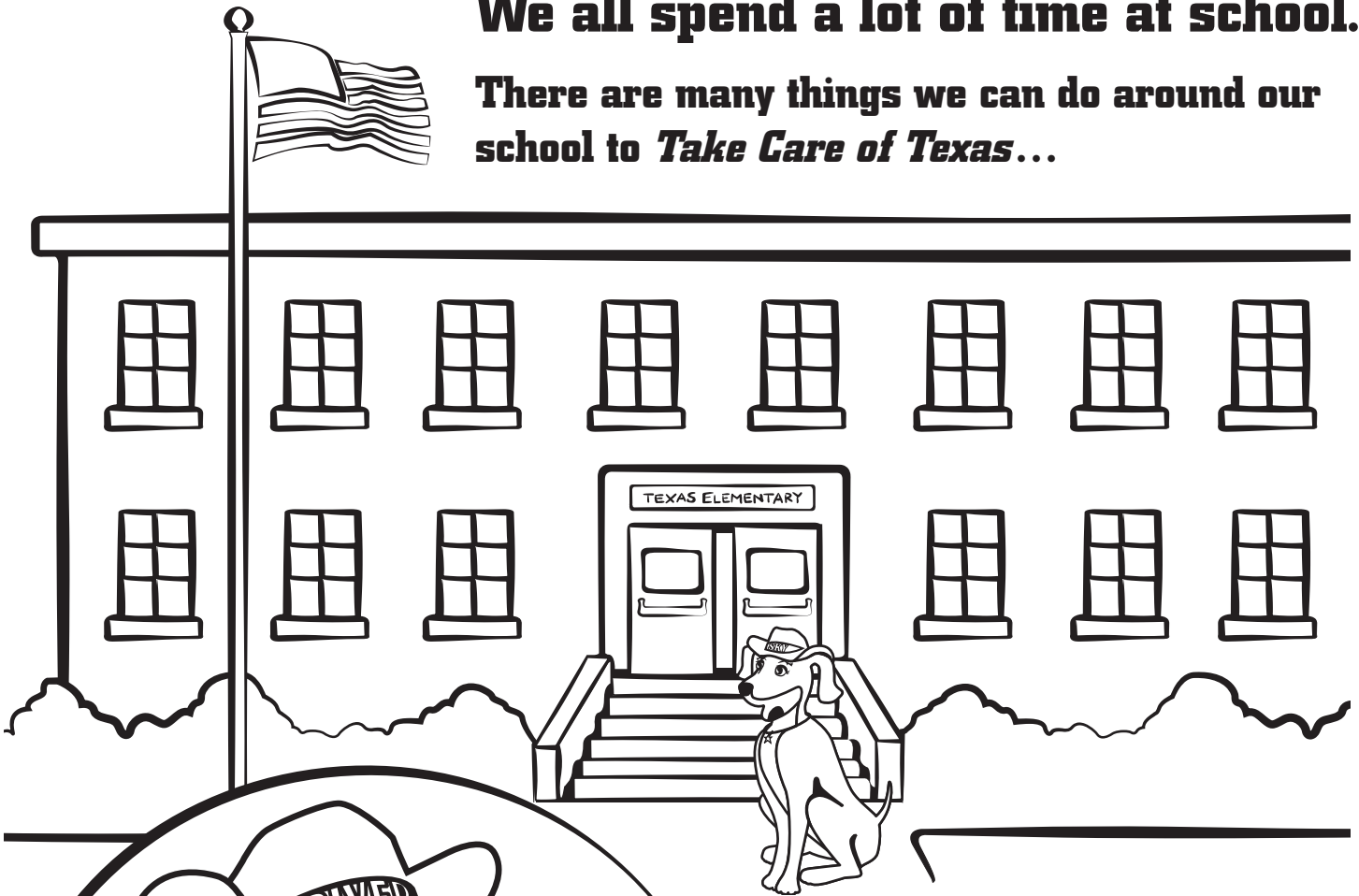
**...swimming, fishing,  
...riding our bikes,  
...or playing outside.**



**If we want to keep enjoying Texas, we need to  
make smart choices every day to *Take Care of Texas!***

**We all spend a lot of time at school.**

**There are many things we can do around our school to *Take Care of Texas*...**



**When we read and write at school, we use a lot of paper.**

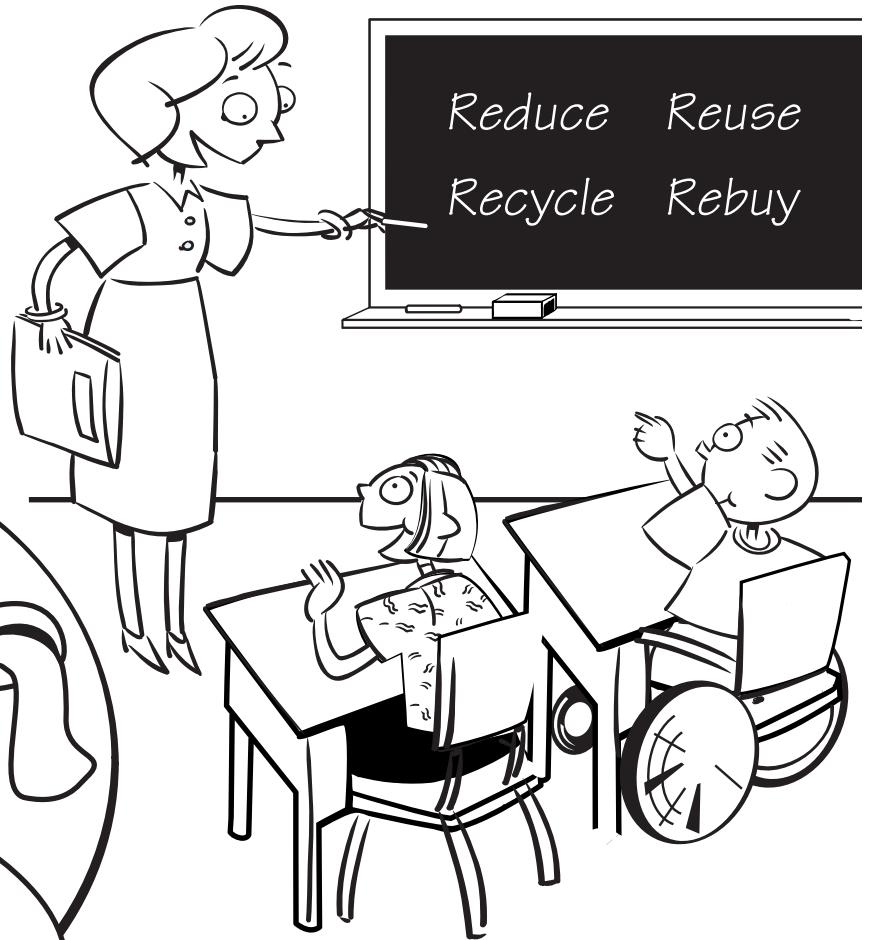


**So we don't waste paper, we can...  
...use both sides of a piece of  
paper and recycle it instead  
of throwing it in the trash.**

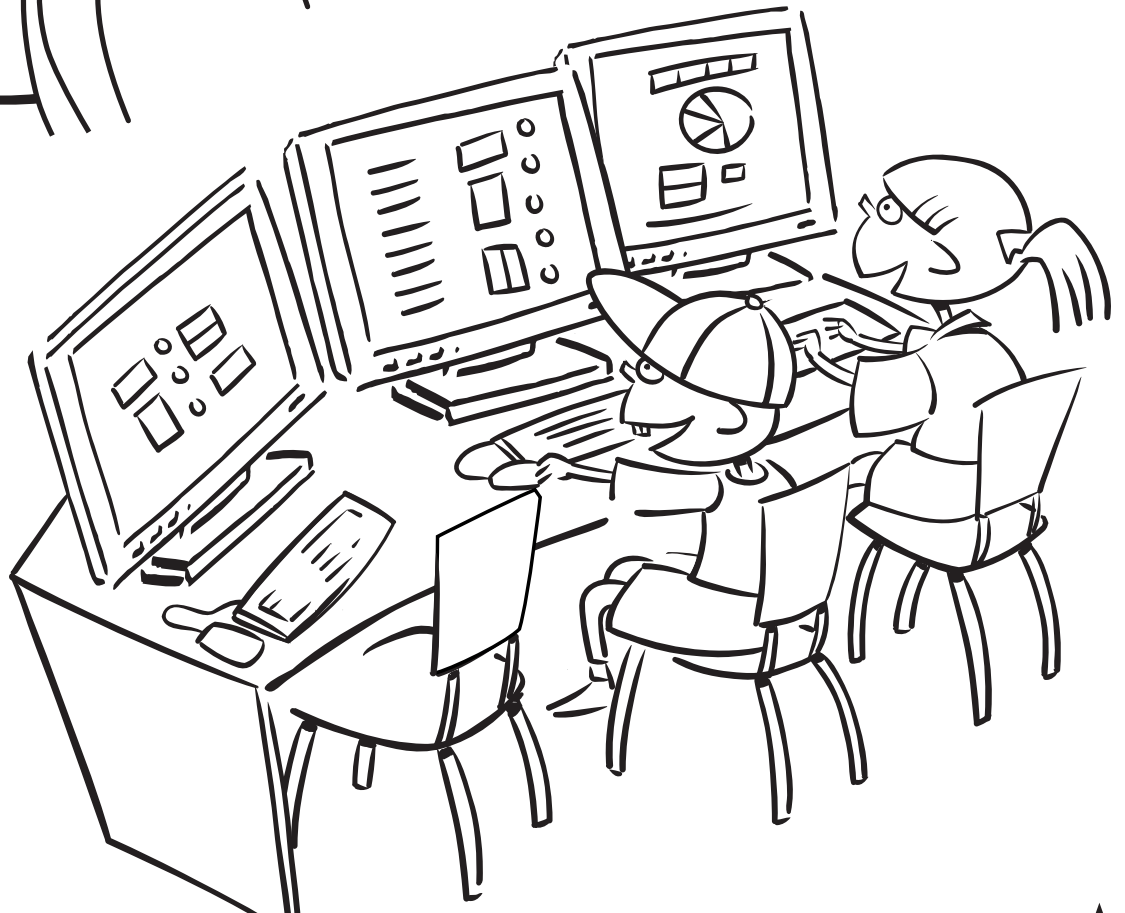


## **We also use electricity at school.**

**By turning off lights, TVs, and computers when we aren't using them, we can conserve electricity, which helps keep our air clean.**

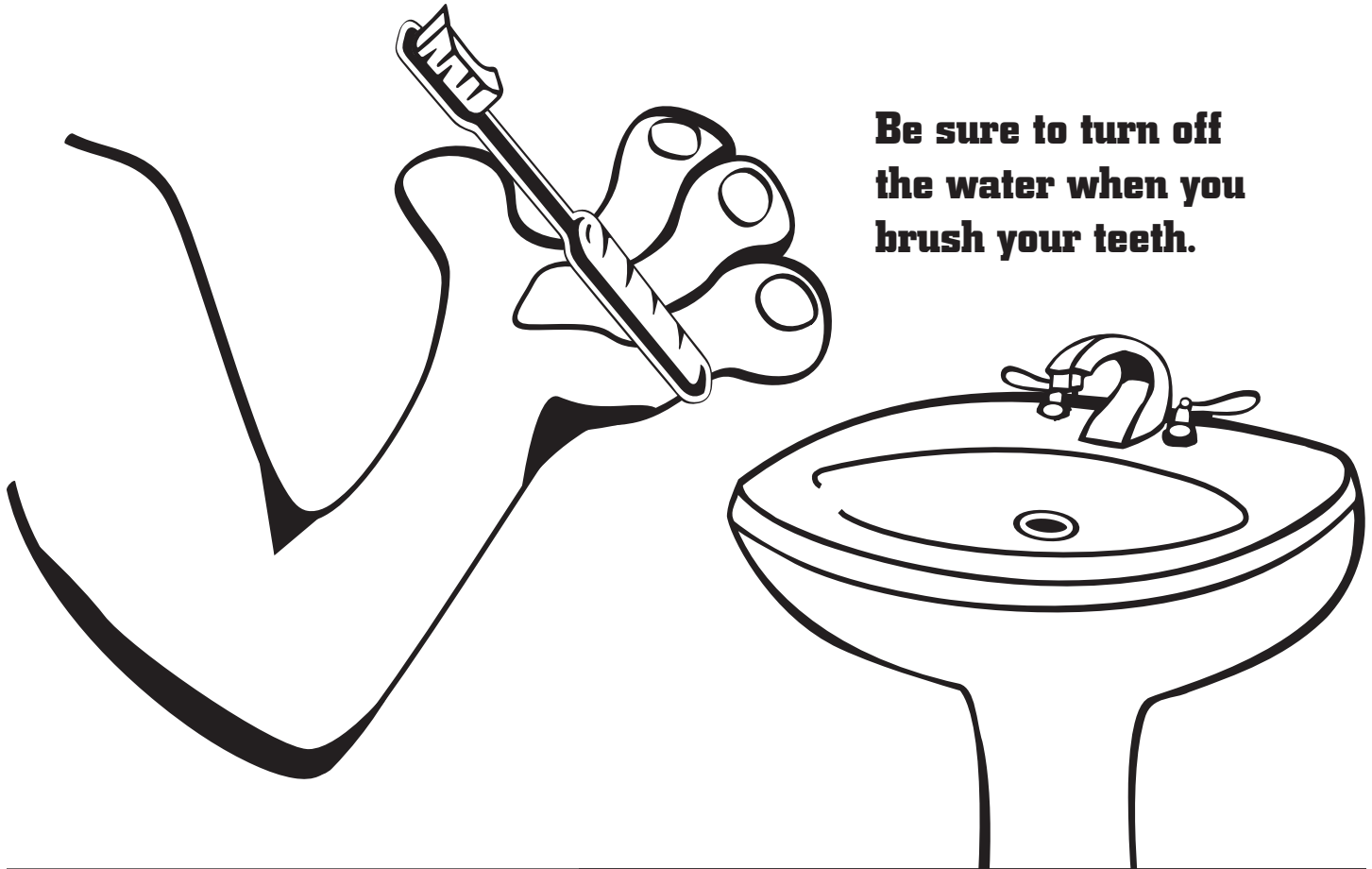


**Activity: Color any computer that should be turned off BLUE and any that should be left on GREEN.**



# **There are many things you can do at your home to help *Take Care of Texas!***

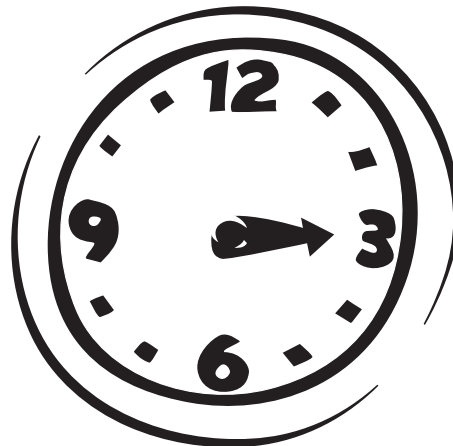
**We can use less water and keep it in our lakes, rivers, and streams.**



**Try to take showers that only last **FIVE** minutes.**

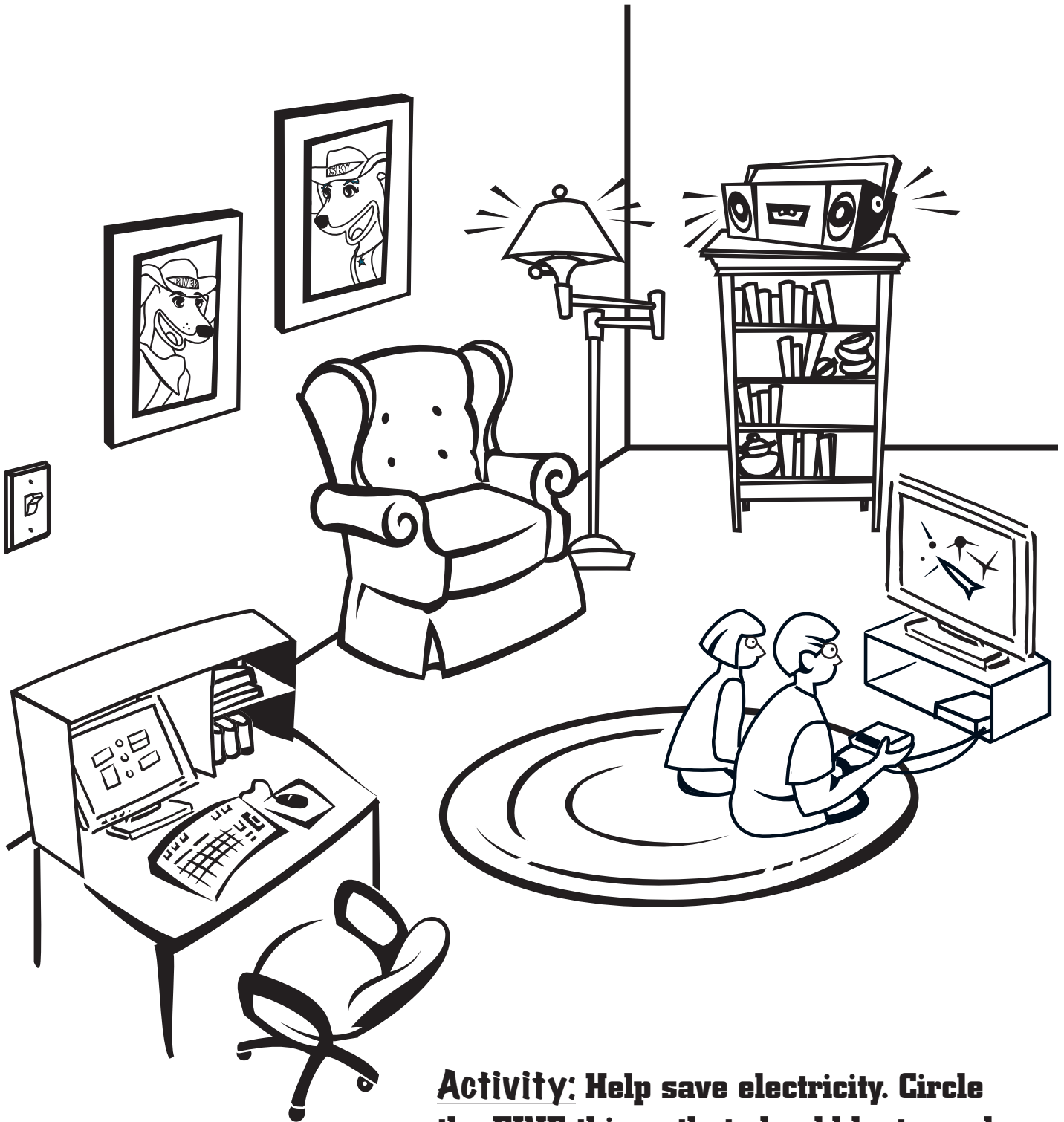


**Activity: Draw the hand on the clock to show that five minutes have passed.**





**When you leave a room, turn off any lights, radios, TVs, computers, or video games that you aren't using.**



**Activity: Help save electricity. Circle the FIVE things that should be turned off when no one is using them.**

**There are many things in your home that you can recycle and reuse.**

**Ask an adult if you can share or donate toys, games, books, and clothes you don't need anymore.**

**Activity:** Can you find **SEVEN** items in this room that can be recycled or reused when you don't need them anymore?

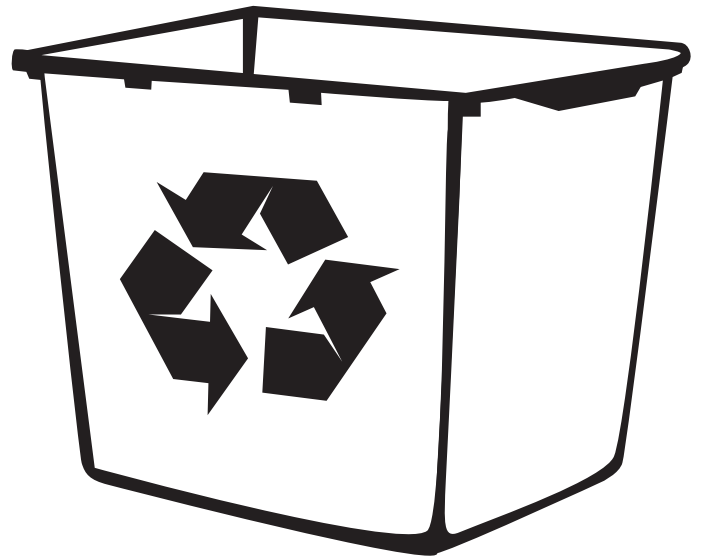


**Not everything can be recycled. Leftovers and food wrappers should NOT go in the recycle bin.**

**Plastic bottles**



**Activity:** Draw a line between the recycling bin and the items that **CAN** be recycled.

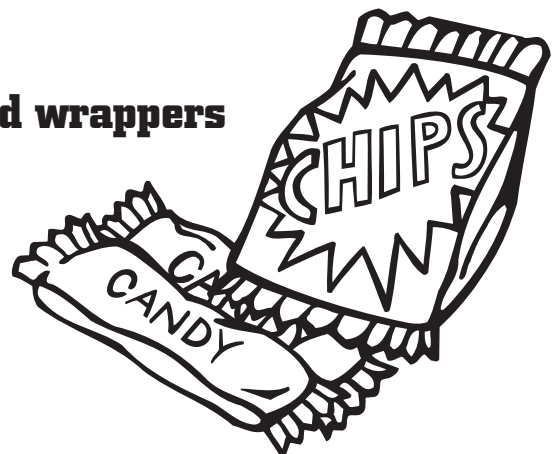


**Aluminum cans**

**Paper**



**Food wrappers**





**We can help *Take Care of Texas*  
by recycling unwanted electronics.**

**In Texas, you may be able to recycle an unwanted  
computer or TV for free. Electronics recycling is easy  
and a great way to conserve valuable resources.**





**You also can reuse the rain.**



**Catch the rainwater that runs off your roof in a rain barrel. Then water your plants and trees with the water you collect.**

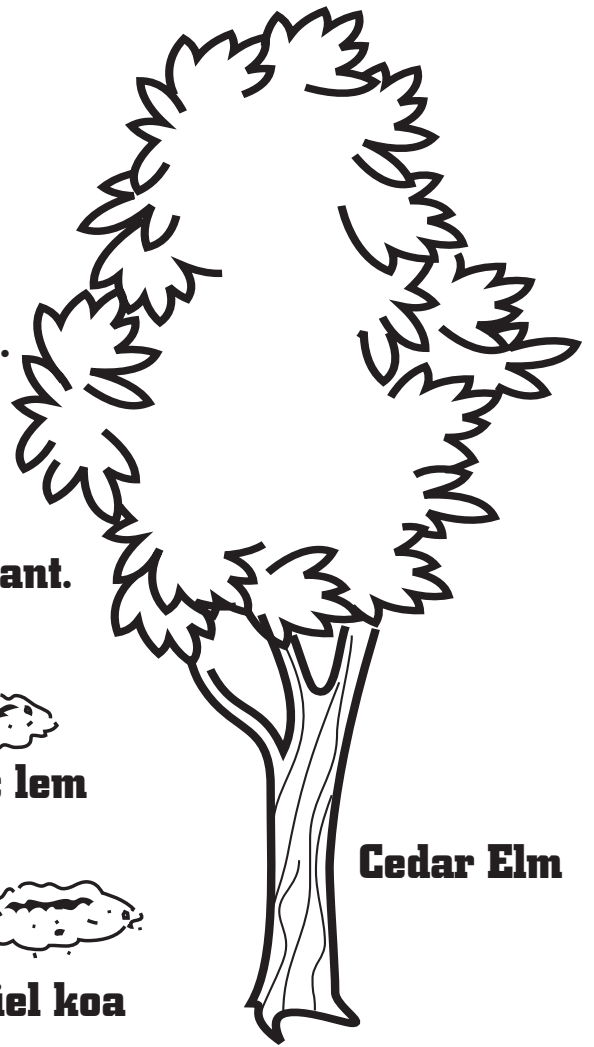


**Trees, flowers, and other plants help make Texas beautiful.**

**Plants that we know grow easily in Texas, called "native plants," use less water.**

**Like all dogs, River and Sky like to dig holes.**

**Activity:** Unscramble each word next to the holes they've dug, and then draw a line from the hole to its matching Texas native plant.



**Cedar Elm**

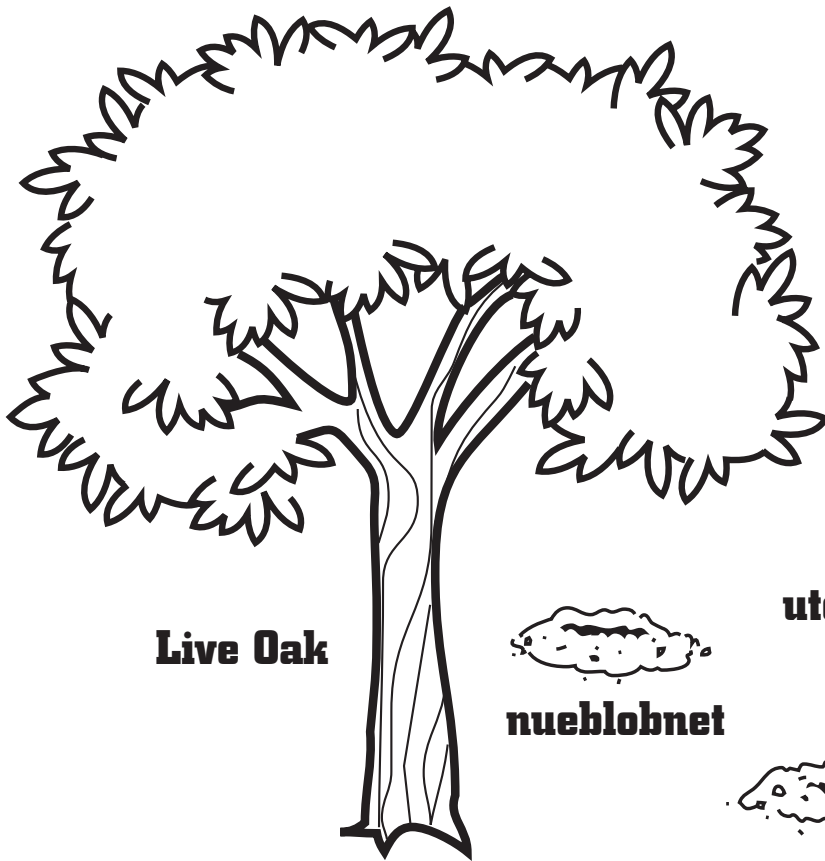
darec lem

viel koa

utomanni rellua

nueblobnet

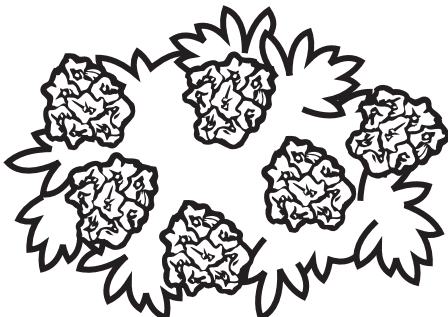
antalan



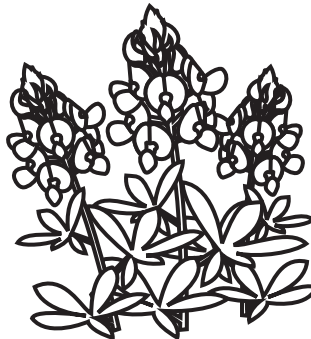
**Live Oak**



**Mountain Laurel**



**Lantana**



**Bluebonnet**

**We can *Take Care of Texas* when we are out and about as well.**

**By doing our part, we can all keep our communities clean and beautiful!**

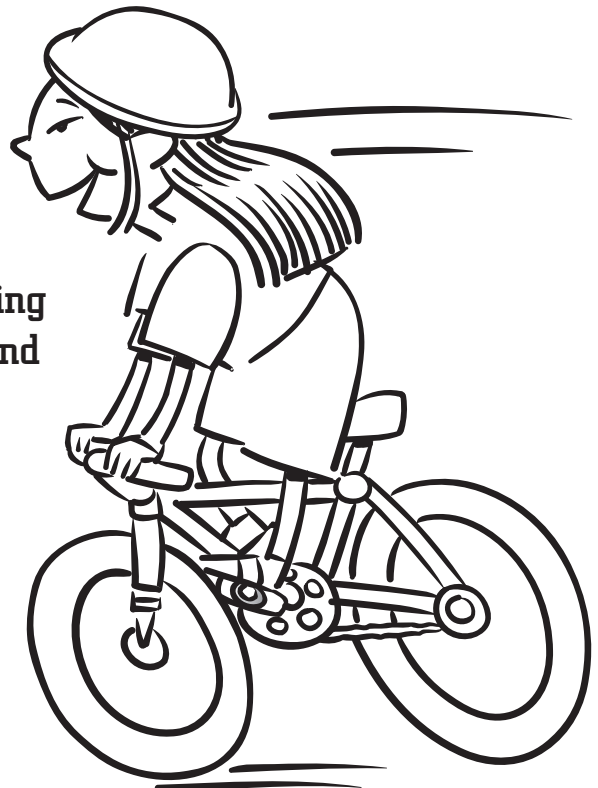


**Don't litter.**

Throw your recyclables in a recycling bin and your trash in a trash can—never throw any of them on the ground!

**Ride your bike.**

Instead of riding in the car, try riding your bike for short trips. It's fun, and it helps keep our air clean.



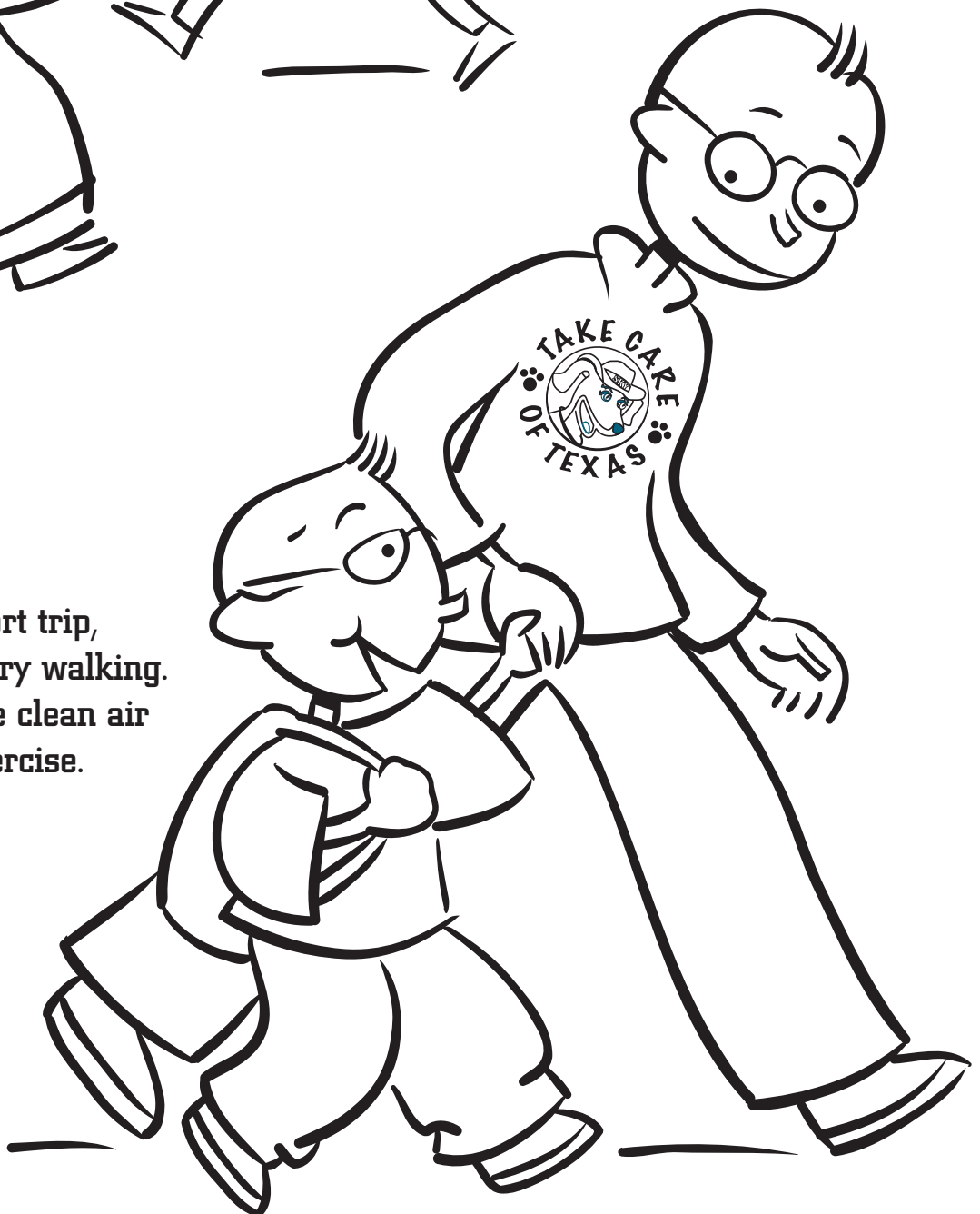


### **Tell your friends.**

Ask your family and friends to help you *Take Care of Texas*. No matter where we live, we can all make smart choices to do our part!

### **Take a walk.**

If it's a really short trip, your family can try walking. You can enjoy the clean air and get some exercise.





# How do you *Take Care of Texas?*

**Activity:** Use this page to draw a picture showing how you and your family *Take Care of Texas!*



# Take Care OF Texas™

It's the only one we've got.

Recording Artist and  
Take Care of Texas  
Spokesperson

KEVIN  
FOWLER

"The only thing I love more  
than playing music  
is being outdoors  
in the great state of Texas."

**Activity:** Use this page  
to draw a picture showing  
what you like to do most  
when you're outdoors.





**PLAY THESE FUN GAMES ONLINE  
AT <TAKECAREOFTEXAS.ORG>.**



**Texas Commission on Environmental Quality**

The TCEQ is an equal opportunity employer. The agency does not allow discrimination on the basis of race, color, religion, national origin, sex, disability, age, sexual orientation, or veteran status. In compliance with the Americans with Disabilities Act, this document may be requested in alternate formats by contacting the TCEQ at 512-239-0028, Fax 512-239-4488 or 1-800-RELAY-TX (TDD), or by writing P.O. Box 13087, Austin, TX 78711-3087.

Printed on recycled paper using vegetable-based ink.

**How is our customer service?**

Fill out our online customer-satisfaction survey at <[www.tceq.texas.gov/customersurvey](http://www.tceq.texas.gov/customersurvey)>.



**TakeCareOfTexas.org**  
**Online Tips to Do Your Part!**